

PRELIMINARY PROPOSAL

TEMPERED BY MEMORY

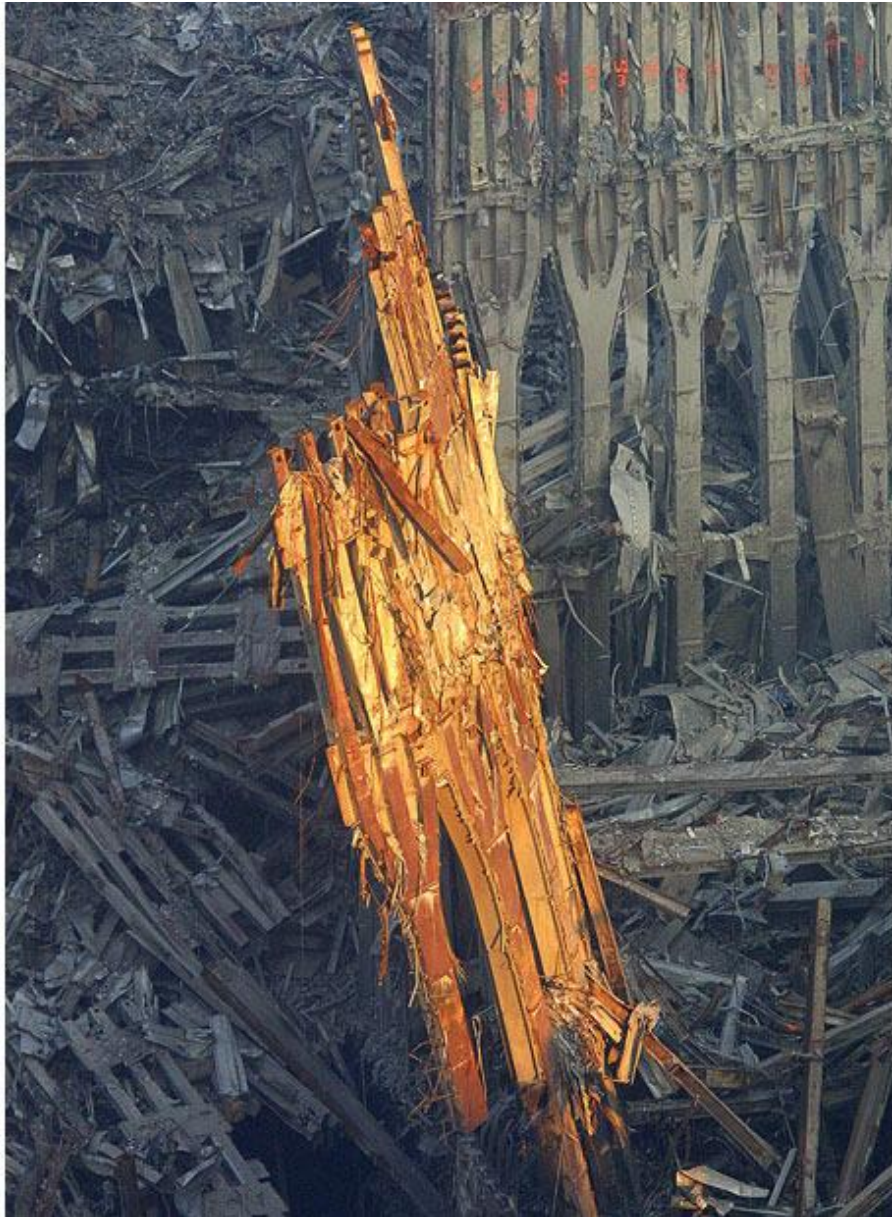
911 sculptural monument
for
The City of Saratoga Springs, New York
May 2010



John van Alstine

Noah Savett

in conjunction with the Saratoga Arts Center



4 October 2001: The morning sun reflects off of a portion of the remains of the World Trade Center

CONCEPT – marking collective memory

It has been nearly a decade since the events of September 11, 2001. As we gain some distance it is clear that it has emerged as a pivotal date in American history that has shaped and tempered our collective national memory.

For this reason and to honor those who lost their lives and those who unselfishly volunteered during the events of that day and days and months that followed, we feel a substantial sculptural memorial be conceived and erected in our city.

FORMAL DESIGN – appropriate aesthetic spirit

Our design will use steel beam remnants from the actual trade towers that are offered by the Port Authority. Images of the twisted steel façade have been burned into our collective psyche and are now powerful visual icons. We will build on that power and create a commanding visual and commemorative statement.



"TEMPERED BY MEMORY"
preliminary proposal - 9/11 monument
North Broadway - Rte 50, Saratoga
approx 20-25 feet high

John van Alstine - Noah Savett

preliminary proposal 1

Because we are not sure exactly what material will be available to us at this preliminary stage we can only project the aesthetic spirit of the final monument.



TEMPERED BY MEMORY-TRIAD™
preliminary proposal - 911 monument
North Broadway - Rte 50, Saratoga
approx 20-25 feet high
John van Alstine - Noah Savett

Preliminary proposal 2

SCALE and SITE

A delicate balance - sensitive to the event and the local site

We feel it is important to build a work of substantial scale in keeping with the significance events of 911 but also be sensitive to the site where it is placed. One site currently under consideration is the traffic island at the intersection of **North Broadway and Rte 50**. For this location we propose of a work 20-25 feet high. The depth and width will be appropriately scaled to fit the long narrow proportions of the island.

Proper landscaping and lighting will be important. We see the sculpture lifted on a foundation and area around it “bermed” to present the piece in away that separates it from the visual clutter which is currently predominate.

TRANSPORT – moving the steel

We have a preliminary commitment from the US Naval Base in Saratoga to provide heavy equipment for transport of material from the Port Authority storage site in the New York City area to Saratoga. They may also be able to provide other equipment to erect the sculpture.

CREATIVE PROCESS – actual fabrication

A fabrication site where the steel elements can be stored, worked and assembled into the final sculptural form is needed. At the moment one location under consideration is the yard and shop of **NS Associates**, Gansevoort, NY, a large modern fabricating facility specializing in structural and miscellaneous metals owned by Noah Savett. The exact cost and possible partial charitable donation of space, engineering, and labor is being worked out.



CONCLUSION – adding to the Saratoga's history and treasure

We believe this project will be a fitting monument to the events of September 11, 2001 and to those it effected. It will also create a substantial new point of interest on Broadway and will add another feature to the city's special and unique character. As far as we know it will be the only project of this nature at this scale in the northeast. It will be one more reason that Saratoga is one of the premier "small towns" in upstate New York and the northeast United States.

ADDENDUM

JFK AIRPORT HANGER - PORT AUTHORITY SITE VISIT – seeing is believing

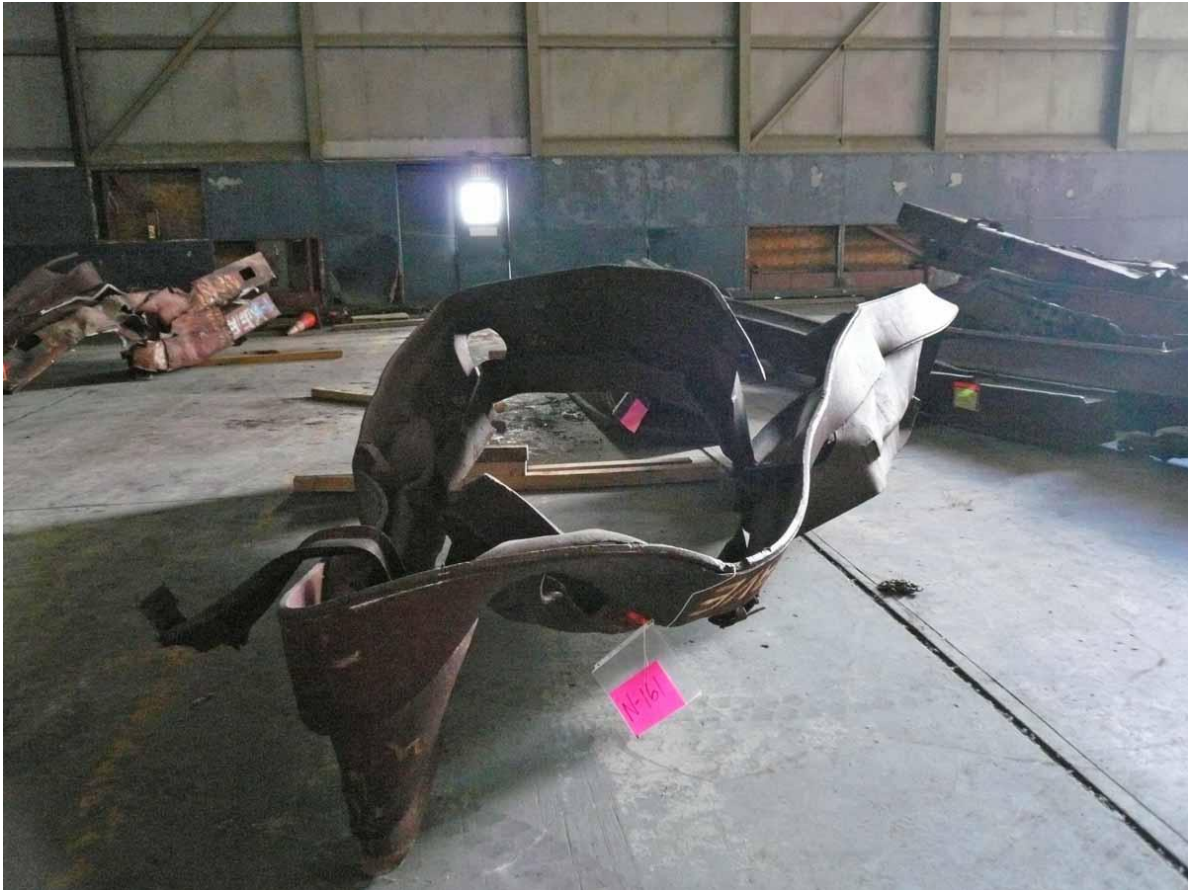
On July 1, 2010 we made an escorted visit to a hanger at JFK airport where the Port Authority is archiving and storing artifacts from September 11th. The visit gave us firsthand experience with the remnants of the event and provided insights of its enormity. We selected 5 large pieces of steel and will start to concretely form our sculpture ideas for the project. The last image in this section is a digital composite of our most current concept. The exact form of the sculpture will be determined once the elements are in Gansevoort and we start the process of creating the work.



Selected - approx 7'h x10'w piece



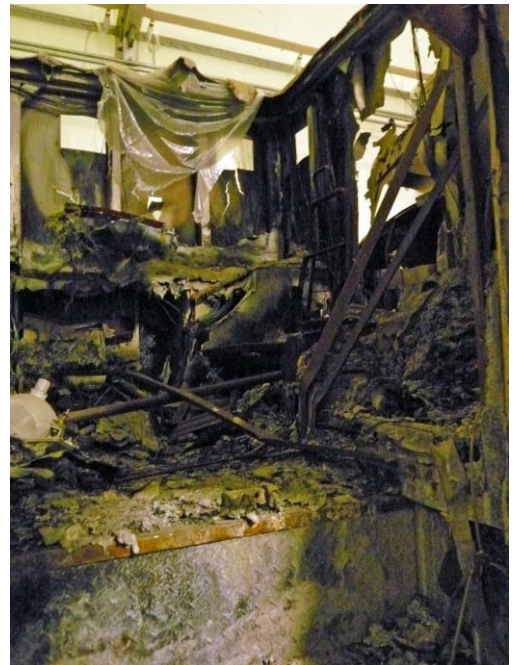
Selected - approx 15'long



selected - approx 20'long



Antenna – from top of Tower 2



Inside ambulance



photo –
Calder
Sculpture



Calder Sculpture – parts retrieved



"meteor" – conglomerate from fireball



firetruck



Preliminary "City Center" digital rendering – proposed height: 20-25 feet – to be determined